



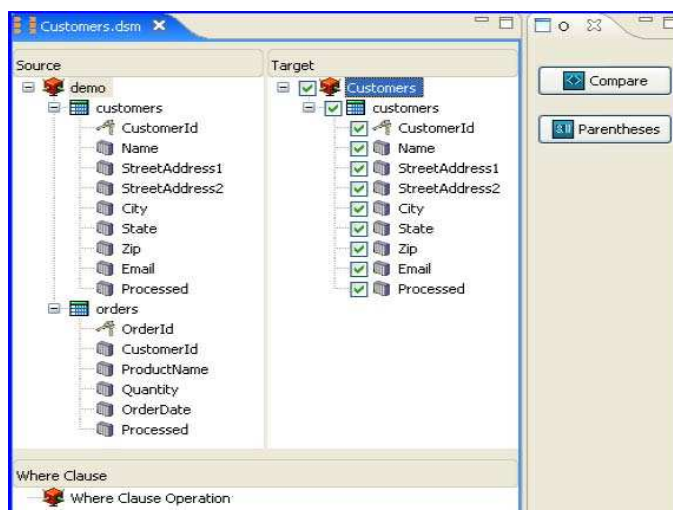
ChainBuilder Connect for Database Integration

Bostech's ChainBuilder Connect enables organizations to fully leverage the data that is stored in a variety of repositories through a wide range of communication channels.

The ChainBuilder Connect solution utilizes graphical interfaces to allow rapid application development and deployment through drag-and-drop functionality coupled with easy to use step-by-step wizards. In addition to standard integration components available, ChainBuilder Connect includes two database-specific integration connectors: ETL and JDBC.

Introducing the ETL Design Studio

ChainBuilder Connect's ETL Design Studio is a set of custom Eclipse plug-ins that walk users through the process of connecting to a database and selecting tables and fields to be extracted or loaded. The ETL Design Studio makes use of wizard-driven configuration screens with drag-and-drop database table and field selection.



Drag and drop database tables from Source to Target.

Field selection for the resulting XML schema can be further narrowed through check boxes.

The ETL Design Studio wizard finishes by generating an XML schema, defining either the format of data to be extracted from the database or the format used for inserts or updates. Advanced settings, such as transaction and batch size, can be configured to achieve maximum throughput performance.

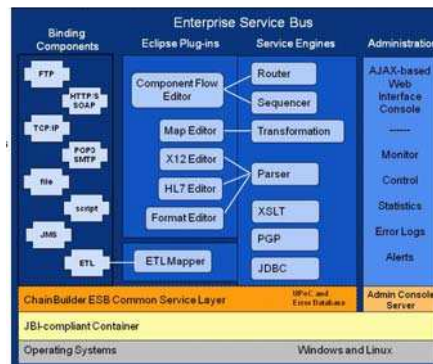
The resulting run-time queries a database on a scheduled basis to extract into the defined schema. After data extraction, the ChainBuilder Connect Map Editor can optionally be used to perform data mapping, validation and data cleansing before data is loaded into target source.



Product Description

Bostech helps companies efficiently integrate database applications using a standards-based middleware solution.

ChainBuilder Connect consists of graphical tools to configure database access and pre-built components that help speed the process of unifying database-driven applications throughout the enterprise.



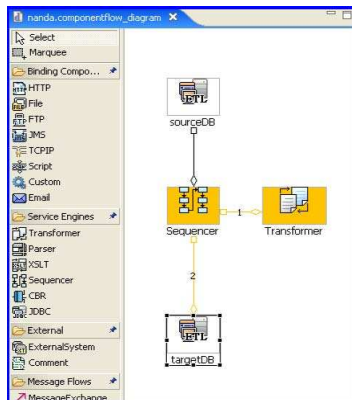
Business Benefits

- Connect disparate database systems in a Service Oriented Architecture.
- Develop solutions with familiar and easy to use graphical user interfaces without JDBC programming.
- Rapidly deploy database solutions leveraging pre-built components
- Expand internationally with double-byte/Unicode character sets and localization support.
- Securely manage your solution with full support, warranty and indemnification license options.

ChainBuilder Connect for Database Integration

More on Using the ETL Component

The ETL (Extraction, Transform and Load) Component is classified as a ChainBuilder Connect Custom Component and is managed within the ChainBuilder Connect Component Flow Editor as a part of the Service Assembly.



A typical business use case for ETL is to retrieve data from one database, map it into another format, and then insert the modified data into a second database.

Synchronization of databases occurs via scheduling or marking rows, selecting each row from the source table only once.

Introducing the JDBC Service Engine

The ChainBuilder Connect JDBC Service Engine allows direct access to a database using SQL. Use the JDBC Service Engine (either scheduled or event-driven) to execute any SQL Statement, e.g. query, insert or update, and receive the result as a usable message in the data flow. The result can be translated, returned to the originating system, or sent to another destination.

Product Feature Set

ChainBuilder Connect's feature set spans integration needs ranging from real-time, transactional interfaces to large batch, performance-intensive applications.

Supported Protocols

- FTP
- HTTP/SOAP
- JMS
- SMTP
- POP3
- TCP/IP with HL7 MLLP

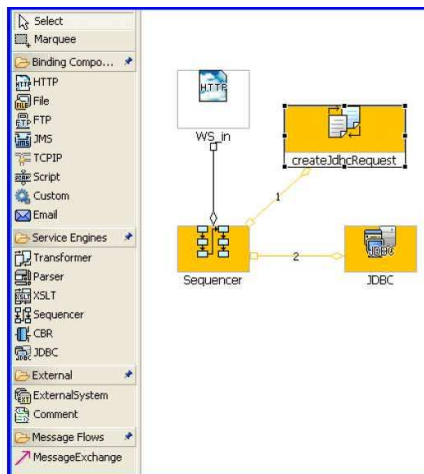
- File

Supported File/Data Formats

- Fixed
- Variable
- XML Schema
- HL7 2.1, 2.2, 2.3, 2.3.1, 2.4, 2.5
- EDI X12 3020, 3030, 3040, 3050, 3060, 3070, 4010
- XSLT
- JDBC

Development Standards

- Eclipse IDE
- Java Business Integration (JBI)
- WSDL



A common JDBC usage scenario is an exposed Web Service that receives a query and returns the result of the query to the calling client.

Development Standards

- Eclipse IDE
- Java Business Integration (JBI)
- XML Schema

System Requirements

- Operating Systems:
Windows Linux
- Hardware:
Pentium 4 Dual 3.0Ghz
2GB RAM and 10GB DASD

©Copyright Bostech Corporation 2009 Bostech Corporation, 1311 West 96th Street, Suite 105, Indianapolis, IN 46260 USA

All Rights Reserved Bostech, ChainBuilder Connect and all related logos logo are trademarks of Bostech Corporation.