



ChainBuilder Connect for Healthcare Application Integration

Interoperability within and across organizations is a key enabler for today's leading healthcare enterprises. Bostech helps professionals in healthcare organizations realize the vision of gaining access to the information they need, when they need it, in a cost effective fashion.

With Bostech's ChainBuilder Connect and Services, we can help you transform your organization by efficiently unifying the data and software applications that are the life support system of the healthcare enterprise. With ChainBuilder Connect you can extend the useful life of your existing systems while adding new functionality, ensuring rapid return on IT investments while preserving the flexibility you need to deal with the ever-changing financial and regulatory requirements of the healthcare industry.

ChainBuilder Connect as an Enterprise Service Bus provides native support for XML and Web Services, key building blocks that enable you to get ahead of the growing movement toward Service Oriented Architecture (SOA). With ChainBuilder Connect you can move toward SOA incrementally, exposing legacy application components as services or you can aggressively pursue the wholesale migration of all key systems capabilities to a services orientation.

The ChainBuilder Connect community includes an open development portal with forums, product information, wiki and other resources. To learn more about the ease of use and rapid deployment functionality in ChainBuilder Connect, visit <http://www.chainforge.net/healthcare>.

ChainBuilder CONNECT™

Product Description

Bostech helps companies efficiently integrate healthcare applications using a standards-based middleware solution.

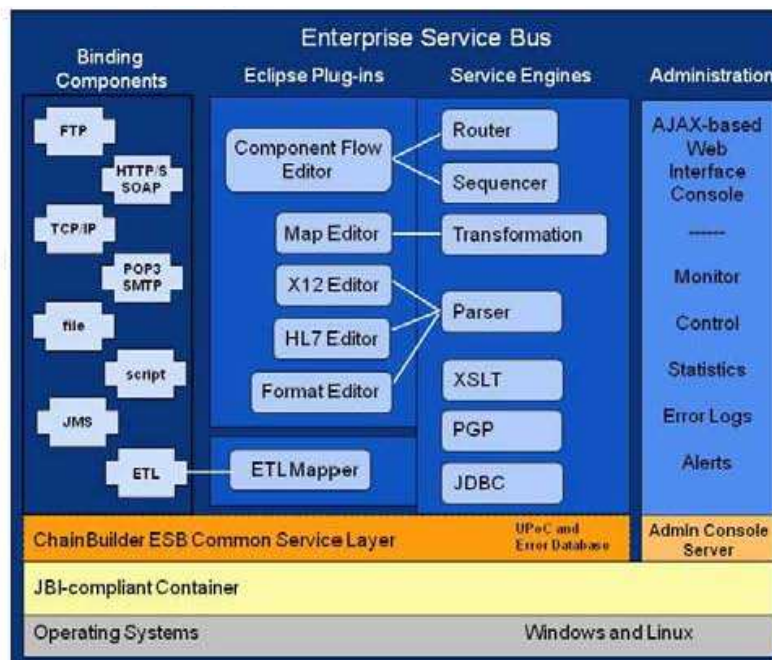
The ChainBuilder Connect solution utilizes graphical interfaces to allow rapid application deployment through drag-and-drop functionality coupled with easy to use step-by-step wizards.

Business Benefits

- Connect disparate software systems in a Service Oriented Architecture.
- Standards-based means not getting tied into a proprietary vendor solution
- Develop solutions with familiar and easy to use graphical user interfaces
- Rapidly deploy solutions leveraging pre-built HL7 components
- Deploy and control run-time web interface.

System Requirements

- **Operating Systems:**
Windows
Linux
- **Hardware:**
Pentium 4 Dual 3.0 Ghz 2GB RAM (recommended) 10GB DASD (recommended)

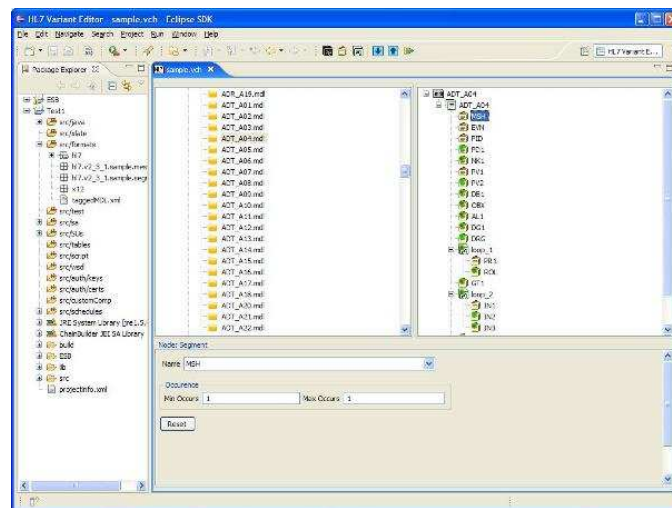


ChainBuilder Connect for Healthcare Application Integration

Features

ChainBuilder Connect provides healthcare organizations graphical tools developed in the popular Eclipse development environment to configure application interfaces, along with pre-built components that help speed the process of unifying applications throughout the enterprise.

- HL7 graphical messaging editor for drag-and-drop mapping
- Web Services and traditional protocol support, including TCP/IP HL7 MLLP
- Create Java Business Integration (JBI)-compliant components
- XML and non-XML data handling
- Web-based Admin Console to deploy and manage components
- API Framework to write user exit (custom code) to alter component behavior
- Windows and Linux platform support
- Error handling and reliable message delivery
- Double-byte/Unicode character sets and localization support
- Full support, warranty and indemnification license options



Extensive Healthcare Integration Experience

For more than a decade, Bostech team has been helping professionals in healthcare organizations realize the vision of gaining access to their enterprise and supply chain information in a cost effective fashion. The Bostech team developed HubLink Integrator, one of the first Healthcare interface engines, and later developed Quovadx's Cloverleaf application from 1999 to 2006. Under the Bostech team's watch, Cloverleaf was ranked the Best Integration Engine in Healthcare by KLAS. Today though the latest java-based technologies in ChainBuilder Connect, Bostech helps labs, hospitals and other healthcare facilities improve their productivity and profitability.

Broad Feature Set

ChainBuilder Connect's broad feature set spans the spectrum of integration needs ranging from real-time, transactional interfaces to large batch, performance-intensive applications.

Bostech is your full-service partner for the technology and support required to maximize the efficiency and success of your healthcare business infrastructure.

Supported Protocols

- FTP
- HTTP/SOAP
- JMS
- SMTP
- POP3
- TCP/IP with HL7 MLLP
- File

Supported File/Data Formats

- Fixed
- Variable
- XML Schema
- HL7 2.1, 2.2, 2.3, 2.3.1, 2.4, 2.5
- EDI X12 3020, 3030, 3040, 3050, 3060, 3070, 4010
- XSLT
- JDBC

Development Standards

- Eclipse IDE
- Java Business Integration (JBI)
- WSDL

©Copyright Bostech Corporation 2009 Bostech Corporation, 1311 West 96th Street, Suite 105, Indianapolis, IN 46260 USA

All Rights Reserved Bostech, ChainBuilder Connect and all related logos logo are trademarks of Bostech Corporation.